

# 8GA75-115 premium

## Technical data



8GA75-115hh004klmm

8GA75-115hh005klmm

8GA75-115hh008klmm

8GA75-115hh010klmm

### Gearbox

	8GA75-115hh004klmm	8GA75-115hh005klmm	8GA75-115hh008klmm	8GA75-115hh010klmm
Number of gear stages			1	
Gear ratio $i$	4	5	8	10
Nominal output torque $T_{2N}$ [Nm]	140	140	90	75
Max. output torque $T_{2max}$ [Nm]	224	224	144	120
E-stop torque $T_{2stop}$ [Nm]	400	400	300	300
Idle torque [Nm] at 20°C and 3000 rpm	6.9	6.55	6.15	6
Max. average drive speed $n_{1N50\%}$ [rpm] at 50% $T_{2N}$ and S1	1150	1200	1400	1500
Max. average drive speed $n_{1N100\%}$ [rpm] at 100% $T_{2N}$ and S1	950	1000	1300	1350
Max. drive speed $n_{1max}$ [rpm]			9500	
Max. backlash $J_1$ [arcmin]			5	
Reduced backlash $J_1$ [arcmin] less than			0	
Torsional rigidity $C_{t21}$ [Nm/arcmin]	12	14.5	14.5	14.5
Tilting rigidity $C_{2K}$ [Nm/arcmin]			0	
Max. breakdown torque $M_{2Kmax}$ [Nm]			0	
Max. radial force $F_{rmax}$ [N] for 30,000 h			6500	
Max. radial force $F_{rmax}$ [N] for 20,000 h			6500	
Max. axial force $F_{amax}$ [N] for 30,000 h			6100	
Max. axial force $F_{amax}$ [N] for 20,000 h			7000	
Operating noise $L_{pA}$ [dB(A)]			68	
Efficiency at full load $\eta$ [%]			96	
Min. operating temperature $B_{Tempmin}$ [°C]			-25	
Max. operating temperature $B_{Tempmax}$ [°C]			90	
Mounting orientation			Any	
Protection			IP65	
Weight $m$ [kg]			9.2	
Moment of inertia $J_1$ [kgcm <sup>2</sup> ]	5.924	5.441	4.989	4.883

**NOTE – Output torque / Max. output torque:** This refers to an output shaft speed of  $n_2 = 100$  rpm and application factor  $K_A = 1$  as well as S1 operating mode for electrical machines and  $T = 30^\circ\text{C}$ , depending on the diameter of the motor shaft. The maximum output torque is only permissible for 30,000 revolutions!

**NOTE – E-stop torque:** Approved for 1000x

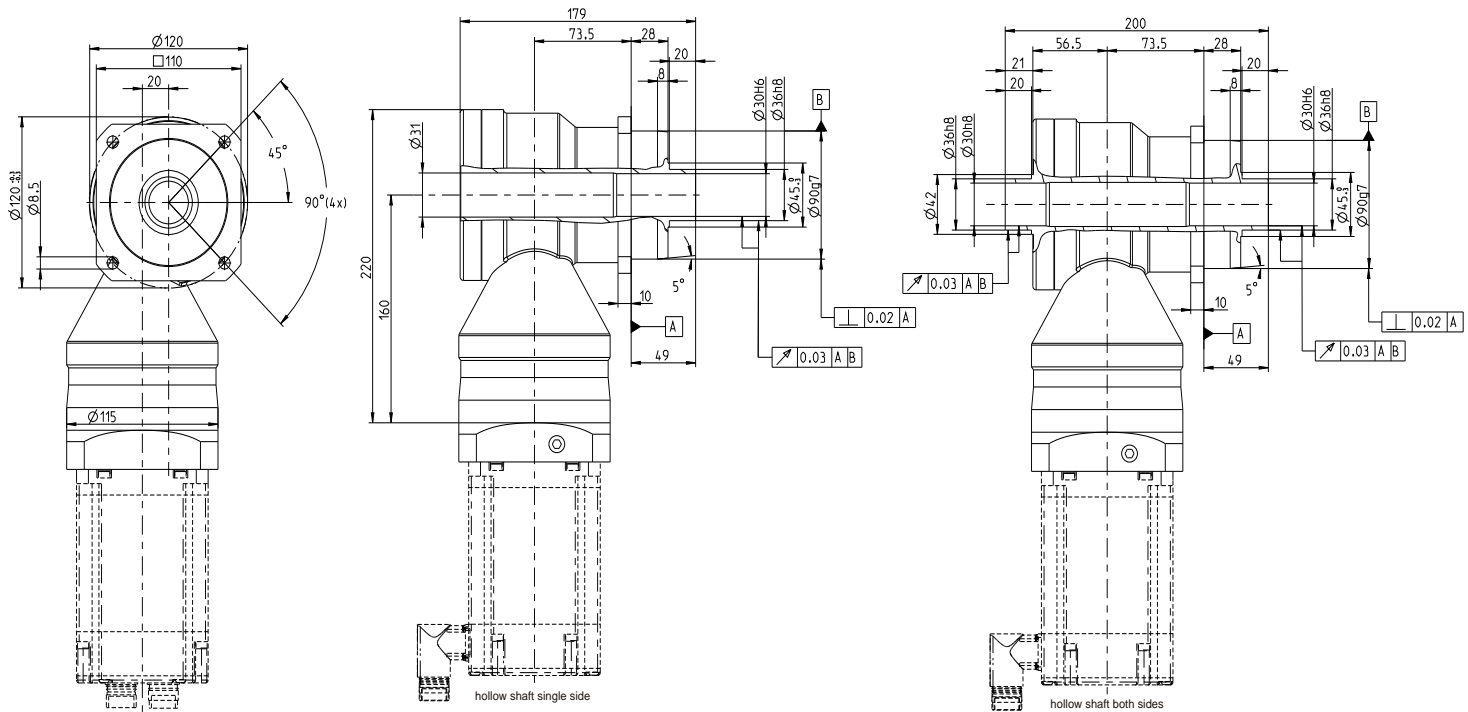
**NOTE – Axial / radial force:** With reference to the middle of the output shaft; the entries refer to an output shaft speed of  $n_2 = 100$  rpm and application factor  $K_A = 1$  as well as S1 operating mode for electrical machines and  $T = 30^\circ\text{C}$

**NOTE – Running noise:** Noise level at a distance of 1 m; at an output speed of  $n_1 = 3000$  rpm without a load;  $i = 5$

**NOTE – Operating temperature:** With reference to the middle of the housing surface

**NOTE – Weight:** Planetary gearbox including universal flange (specific weight upon request)

## 1-stage gear



## Adapter flange - Overview of dimensions

The flange length L completes the diagram for determining the gearbox length.

8GA75-115	8LSA3	8LSA4	8LSA5	8LVA3	8JSA4	8JSA5	8JSA6	8LSN 4	8LSN5	80MPH
Flange length L [mm]	27.6	27.6	37.6	27.6	27.6	37.6	43	27.6	37.6	27.6
Flange diameter Q [mm]	115	115	142	115	115	115	142	115	142	115

## Accessories

### Shrink disc

Model number	D34	D35	L32	L33	Size
8GA75-115-ZSR36-0	72 mm	36 mm	27.3 mm	22 mm	8GA75-115

